

## MORE THAN A TRAIL

From advising on highway congestion to helping secure funding for local park and trail connections, *Gorge Towns to Trails* is building future systems to better manage Gorge recreation areas and promote alternative transit use. This includes efforts led by *Gorge Towns to Trails* staff to assist community partners in exploring the Bridge of the Gods Multimodal Bridge Project, developing the Columbia Gorge Express bus system, and engaging the public on key safety and traffic revision proposals for the Historic Columbia River Highway and Washington State Highway 14.

*Gorge Towns to Trails* also provides creative avenues to support Gorge communities. With Gorge towns typically five to fifteen miles apart and separated by largely undeveloped areas, the 200-mile loop trail network would offer a unique opportunity to create a regional trekking model unachievable in most parts of the United States.

## CONNECTING TRAILS AND COMMUNITY

Since its launch in 2011 by Friends of the Columbia Gorge, support for *Gorge Towns to Trails* has grown with local leaders across the region. In 2017, it was designated a statewide priority for Oregon as a signature trail in the state's Outdoor Recreation Initiative.

Now is the time to rethink how we manage the Gorge's 100-year-old trail system and address challenges within existing systems, such as traffic congestion along the Historic Columbia River Highway and over-use of popular trails. *Gorge Towns to Trails* is an opportunity to build stronger connections between Gorge community leaders and engage state and federal agencies to explore new approaches to age-old problems.

To learn more about how you can join as a supporter or partner please contact *Gorge Towns To Trails* Project Manager Renee Tkach at [renee@gorgefriends.org](mailto:renee@gorgefriends.org) or visit [gorgetownstotrails.org](http://gorgetownstotrails.org).



PHOTO BY MITCH HAMMON TREE



PHOTO BY DEBBIE A. SAKAWA

# GORGE TOWNS TO TRAILS

*Gorge Towns to Trails* is an initiative to create a world-class trekking network encircling the Columbia Gorge—connecting communities with recreation, promoting alternative transportation options, and creating contiguous parcels of protected lands that benefit wildlife.

Designed to enhance and highlight the wonders of the Gorge, the 200-mile loop trail network would serve as an innovative tool to disperse congestion at popular trailheads and introduce people to spectacular, but less visited, areas of the Gorge.

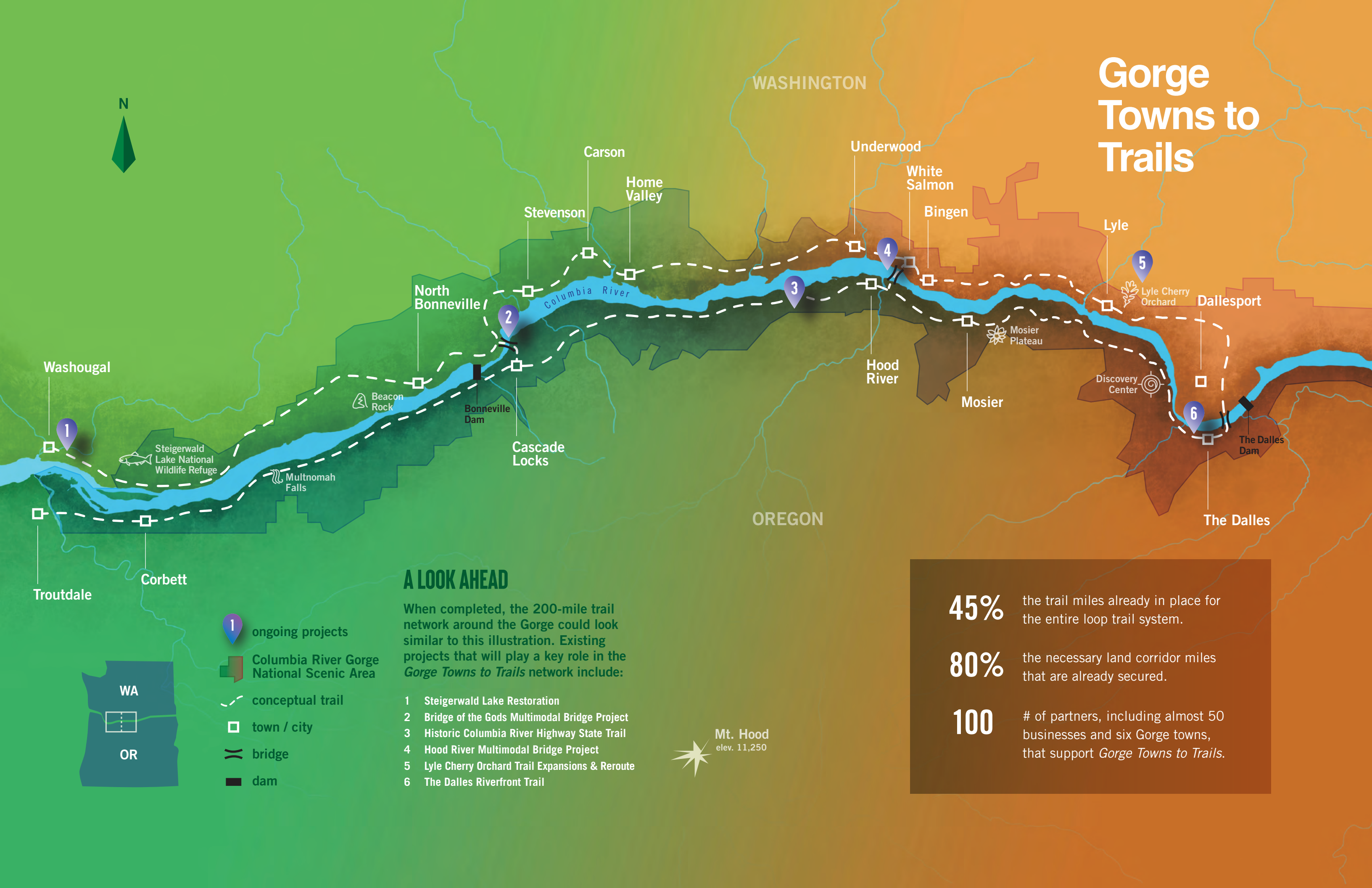
[gorgetownstotrails.org](http://gorgetownstotrails.org)



PHOTO BY DEBBIE A. SAKAWA



# Gorge Towns to Trails



## A LOOK AHEAD

When completed, the 200-mile trail network around the Gorge could look similar to this illustration. Existing projects that will play a key role in the *Gorge Towns to Trails* network include:

- 1 Steigerwald Lake Restoration
- 2 Bridge of the Gods Multimodal Bridge Project
- 3 Historic Columbia River Highway State Trail
- 4 Hood River Multimodal Bridge Project
- 5 Lyle Cherry Orchard Trail Expansions & Reroute
- 6 The Dalles Riverfront Trail

**45%** the trail miles already in place for the entire loop trail system.

**80%** the necessary land corridor miles that are already secured.

**100** # of partners, including almost 50 businesses and six Gorge towns, that support *Gorge Towns to Trails*.